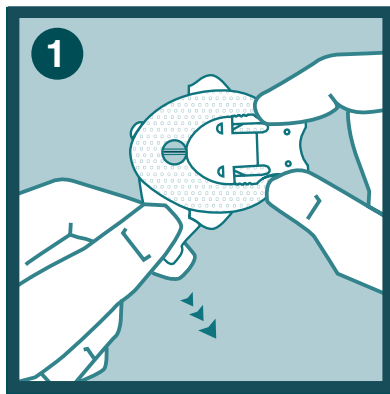


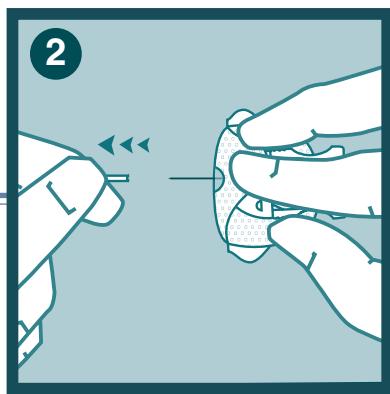
comfort™ short Infusion Set Quick Reference Guide



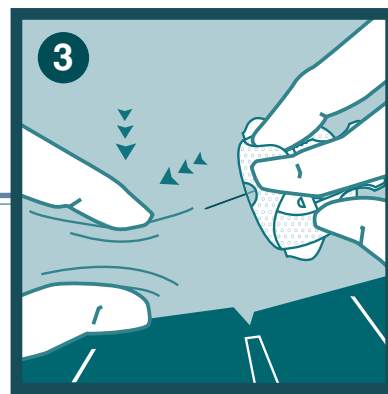
You have chosen to try a quality infusion set from Unomedical. Simply follow the short instructions for use in this document.



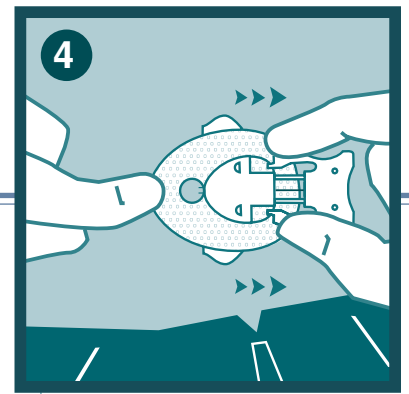
1 Gently remove the front part of the adhesive backing paper.



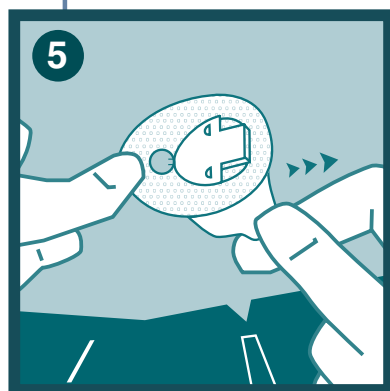
2 Remove the needle guard carefully by gently pulling it.
Important note: Be careful not to touch the introducer needle of the comfort™ short infusion set when removing the adhesive backing paper or removing the needle guard.



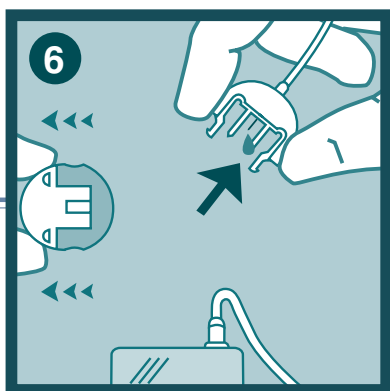
3 Insert comfort™ short infusion set on your clean insertion site by creating a skin fold and choosing an insertion angle (between 20°-45°) as recommended by your healthcare provider.



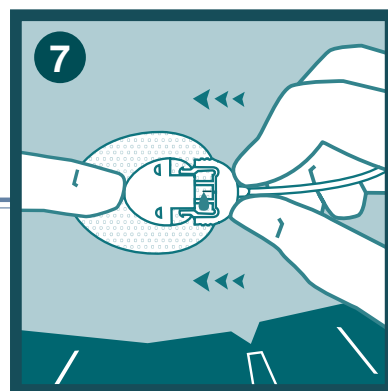
4 Remove the introducer needle before you remove the rear part of the adhesive backing paper. While placing one finger in front of the clear window, press the sides of the introducer needle with the other hand at the same time and gently pull the introducer needle out of the skin.



5 Place one finger in front of the clear window, carefully lift up the back of the adhesive tape, and remove the remaining adhesive backing paper.
Massage the tape thoroughly onto the skin.



6 Connect tubing to pump, remove circular protective cap, and prime tubing according to pump manufacturer's instructions for use.



7 Insert the connector needle into the cannula housing until you hear a "click."
Fill the empty space in the cannula with 0.70 U.

Please note: This guide only illustrates some of the steps to follow when inserting comfort™ short infusion set. It is not a substitute for reading the instructions for use, which come with the product. We recommend that you always read the instructions for use carefully.

Consult the instructions for use for information about disconnection and reconnection.

When initially trying a new infusion set, we recommend that this be done under the supervision of a healthcare provider.

When inserting a new infusion set, make sure always to use a new and clean injection site as recommended by your healthcare provider.

Manufactured by:

