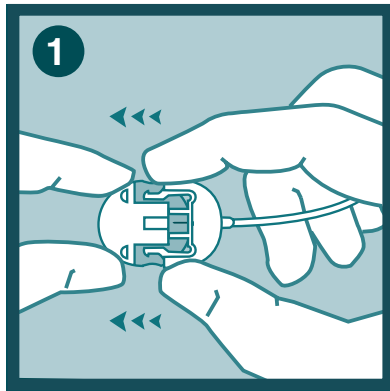


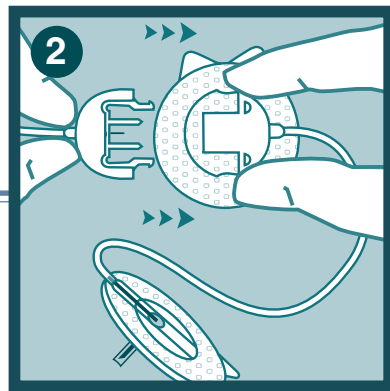
contact™ detach Infusion Set Quick Reference Guide



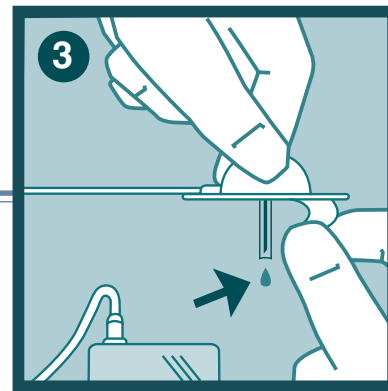
You have chosen to try a quality infusion set from Unomedical. Simply follow the short instructions for use in this document.



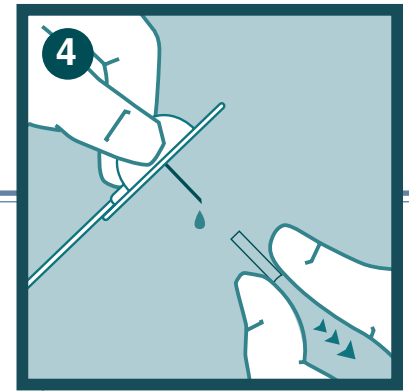
Remove the circular protective caps from the connector needle and the coupling housing.



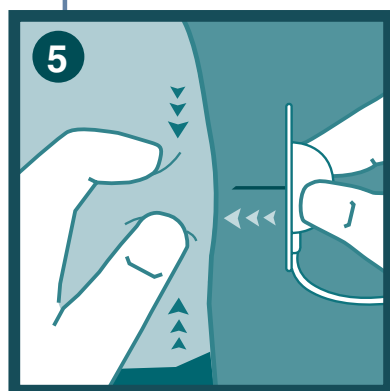
Connect the connector needle with the coupling housing.



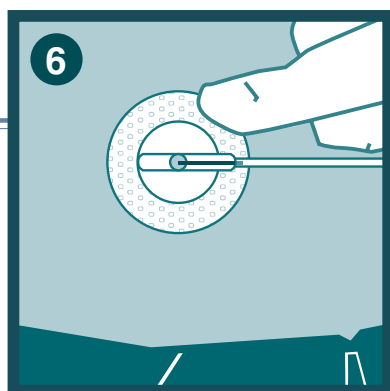
Connect contact™ detach infusion set to the pump and prime the tubing according to pump manufacturer's instructions for use. Hold the contact™ detach infusion set by the retaining wings and with the needle pointing down to ensure that medication does not come in contact with the adhesive backing paper. Remove the adhesive backing paper.



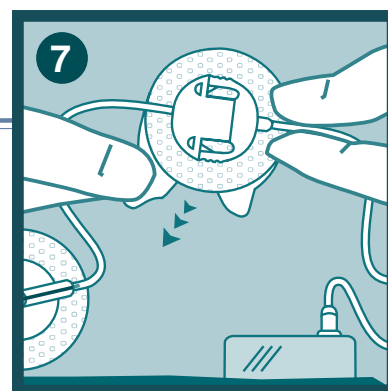
Remove the needle guard carefully by gently pulling it. Be careful not to touch the needle when removing the needle guard. Do not use the infusion set if the needle is bent or has been damaged.



Create a skin fold and insert the contact™ detach infusion set straight in (at a 90 degree angle) on a clean insertion site.



Secure the adhesive on the skin by pressing carefully.



Remove adhesive backing from the coupling housing and place coupling housing on the skin. Secure adhesive of the coupling housing.

Note: No cannula fill is required with contact™ detach infusion set.

Please note: This guide only illustrates some of the steps to follow when inserting contact™ detach infusion set. It is not a substitute for reading the instructions for use, which come with the product. We recommend that you always read the instructions for use carefully.

Consult the instructions for use for information about disconnection and reconnection.

When initially trying a new infusion set, we recommend that this be done under the supervision of a healthcare provider.

When inserting a new infusion set, make sure always to use a new and clean injection site as recommended by your healthcare provider.

Manufactured by:

