

# inset® Quick Reference Guide



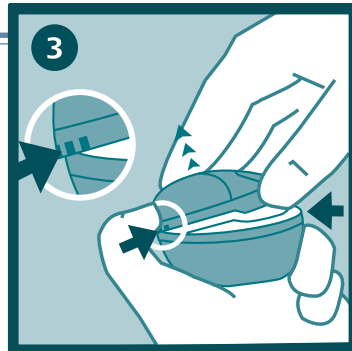
inset® combines the insertion device and infusion set into a single sterile, portable unit. Simply follow the below steps.



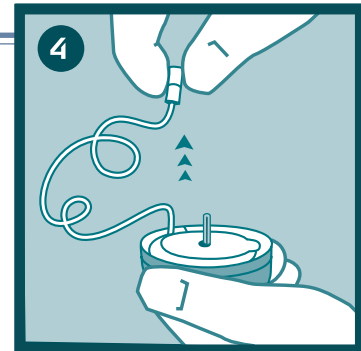
1 Check the tamper-proof seal for damages before pulling the red tape. Do not use device if the seal has been broken. Pull the red tape to remove the seal.



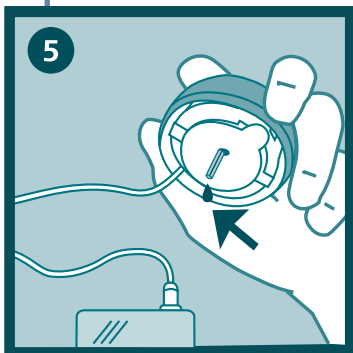
2 Turn over the inset® and remove sterile paper.



3 Firmly press the three raised dots on each side of the lid with one hand and pull with the other hand.\*



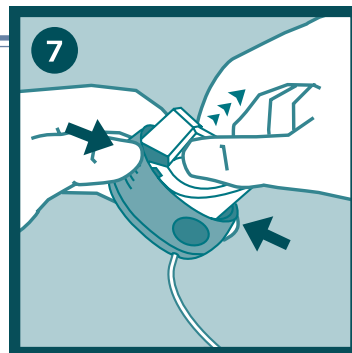
4 Carefully unwind tubing and place a finger on the adhesive backing paper when fully unwinding the tubing.†



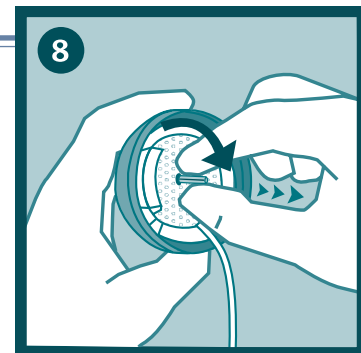
5 Prime the infusion set according to the pump manufacturer's instructions for use. Ensure there are no air bubbles in the tubing or inset.†



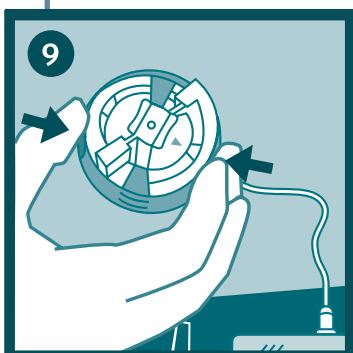
6 Pull up gently to remove the adhesive backing paper, which will come off in a single piece.



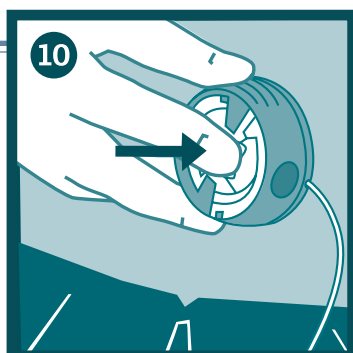
7 Place fingers on lined indentations when loading the insertion mechanism. Pull spring up until you hear a "click."†



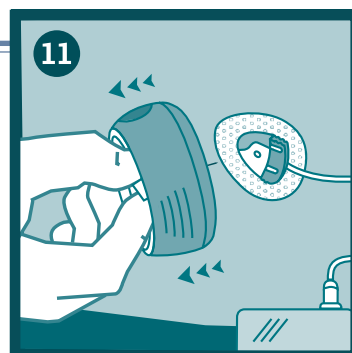
8 Carefully remove the needle guard by gently twisting and then pulling it. Secure tubing in slot.†



9 Place inset® on your clean insertion site and press the round indentations on each side of the insertion mechanism at the same time.



10 Push in gently on the center of the insertion mechanism to secure adhesive on the skin.



11 Grasp center of insertion mechanism. Pull back gently and slowly. Fill the empty space in the cannula with the following prime:

U100-insulin  
6 mm: 0.3 units (0.003 ml)  
9 mm: 0.5 units (0.005 ml)

Discuss this procedure with your healthcare provider.



12 Put lid securely in place until you hear a "click." With lid properly connected, inset can be disposed of safely.

**\*Important Note:** Be careful not to bend the introducer needle of the inset when removing the lid. If the infusion set is not securely placed in insertion device with needle pointing straight ahead, prior to insertion, pain or minor injury may occur. To avoid this please ensure that the steps are done gently in order not to loosen/remove the infusion set by accident.

**†Please note:** This guide only illustrates some of the steps to follow when inserting inset® and it is not a substitute for reading the instructions for use and cautions, which come with the product. When initially trying a new infusion set, we recommend this to be done under the supervision of a healthcare provider.

Manufactured by:



A ConvaTec Company

inset® is a registered trademark of Unomedical a/s.